

Word Storage Cue Cards for Assessment and Intervention

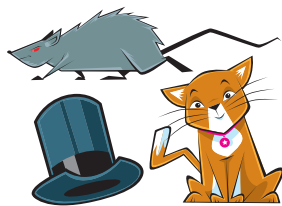
Clap the syllables.



What sound does it start with?

b, c, t

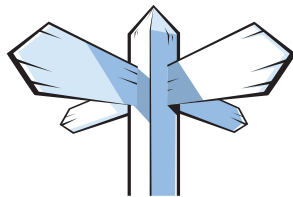
What word does it rhyme with?



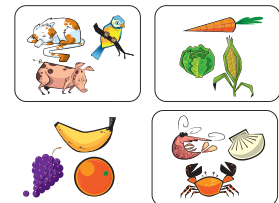
What do we do with it?



Where can it be found?



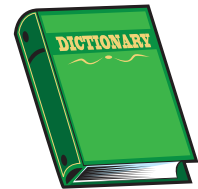
What category is it?



Describe it.



Define it.
What is a ...?
What do you know about the word?

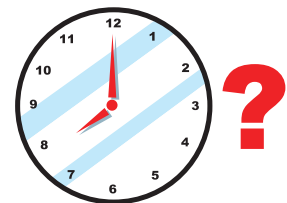


Other useful cue cards for intervention

Who might use it?



When might you use it?



It is a bit like ...
How is it similar to and different from that item?



What is something very special about this item?

