

An Introduction to Sign Language



Why I Chose Sign language?

- Sign language is a subject I am extremely passionate about using and really enjoy teaching and showing others.
- I am a fully qualified Speech and Language Therapist (SALT) and Signalong Tutor. In this role as a SALT and while working in schools this ability to use sign language has been extremely useful.



Aims of today.....

- Why use Signalong? When is it useful?
- What is Sign Language and Signalong?
- Some useful signs when working in a school environment.



Signalong

- Throughout the presentation today I will be using Signalong.
- Signalong is a form of Sign Language called Sign Supported English (SSE), similar to Makaton.
- Signalong is based on British Sign Language (BSL).
- We ALWAYS speak while we sign when using Signalong.
- When using Signalong we only sign key words. For example 'put the book on the table'.



Why use Signalong?



- Signalong can be really useful when working with children and young adults with learning difficulties.
- I've used it with children and adults with Autism, Asperger's, Down Syndrome and Global Developmental Delay.
- Signalong can help aid a child's understanding as the sign provides a visual cue.
- Signalong provides individuals with a mode of communication when speaking is not possible or difficult.
- Can slow the speed of speech down when speaking.

Signs

- Hello
- Working thumb hand (palm back, pointing in) held up in front of body, twists backwards and forwards at wrist.



Signs

- School
- Working flat hand (palm back, pointing up) makes vertical inward circle in front of chin.



Signs

- Help
- Blade of working fist rests on supporting palm; formation moves up/forwards. “Help ME”; move formation up/back.



Signs

- Please and Thank you
- Thank you – Working flat hand (palm back, pointing up) fingers in front of bottom lip, make short forward movement.
- Please – Working flat hand (palm back, pointing up) fingers in front of bottom lip, drops forward and down (palm up, pointing forward).



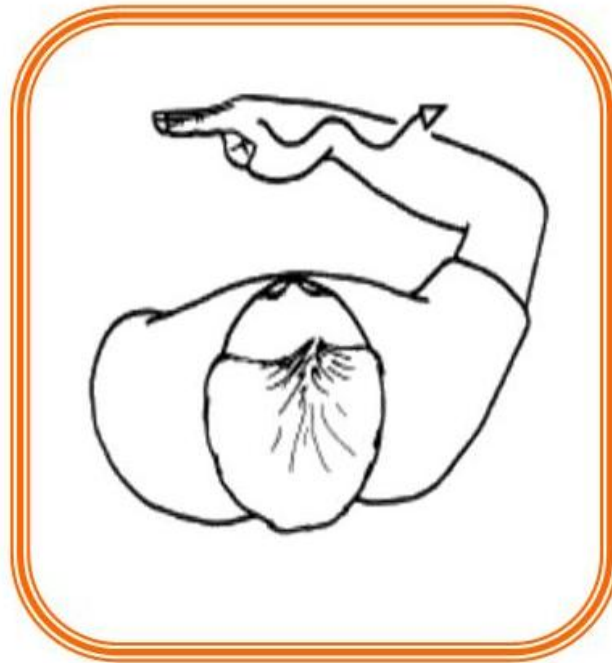
Signs

- Literacy
- Index hands (palms in/back, pointing forward/in), working index moves down and up supporting index twice.



Signs

- Art
- Working “N” hand (palm back, pointing in) moves out making a wavy line.



Signs

- Science
- Working open hand (palm down, pointing forward) thumb taps twice at side of temple.



Signs

- Goodbye
- Working flat hand (palm forward, pointing up) waves twice.



Signs

- Home
- Working bent hand (palm in, pointing up) bends inwards from wrist moving in a short way finishing palm down pointing in.



Any questions?

